

Wilmington Learning Collaborative

Executive Director's Report

Students First. Connected Schools. Purposeful Partnerships.

June 18, 2024

Dr. Laura Burgos

New WLC Website!



WELCOME TO THE

WILMINGTON LEARNING COLLABORATIVE

Learn More

Visit us at wlc-de.org



**FOLLOW US FOR THE
LATEST UPDATES:**

 @wilmingtonlearningcollaborative

 @wlc_de

 @wilmington-learning-collaborative

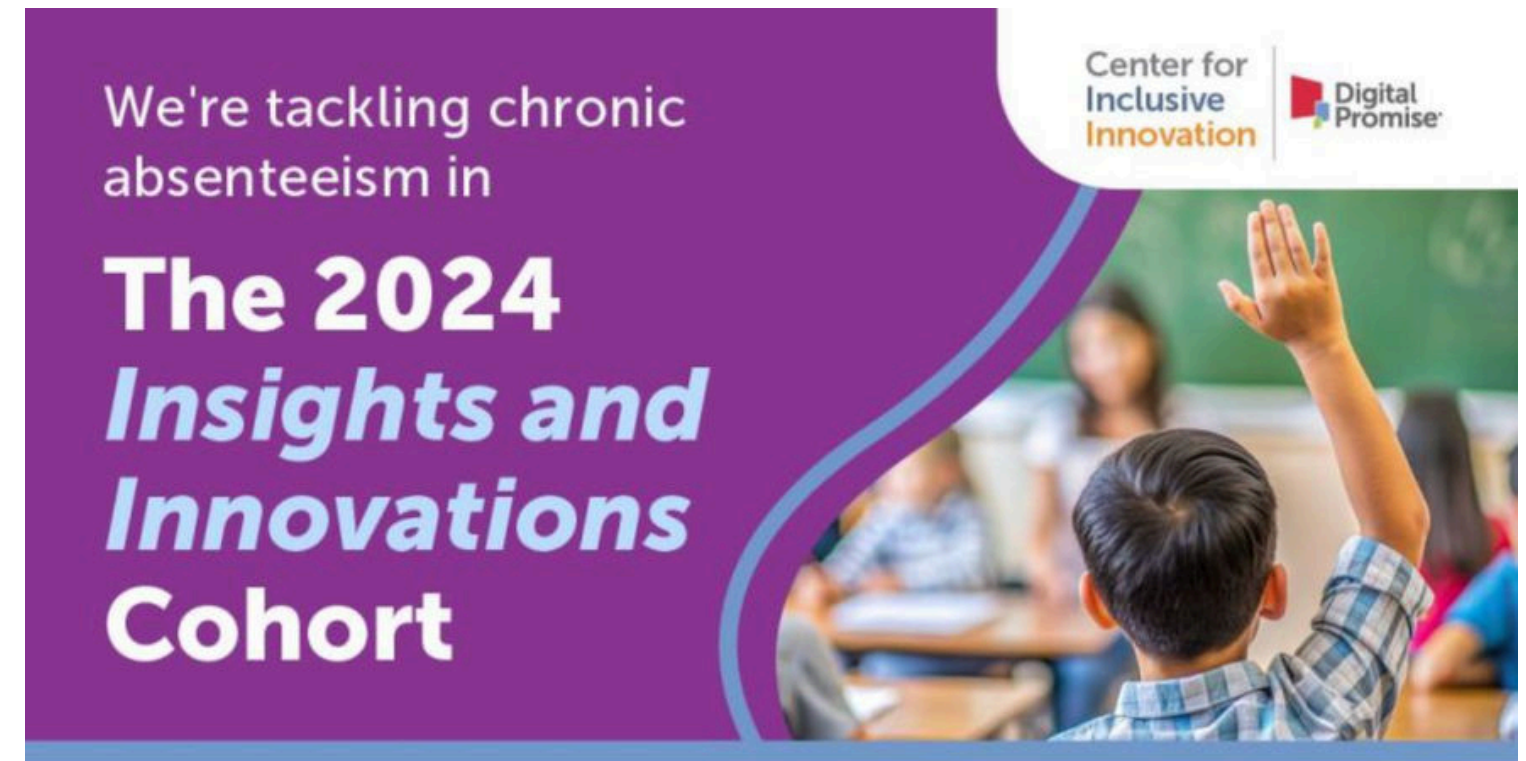
 @wlc_de

 wlc-de.org/#email



WLC Joins National Cohort on Chronic Absenteeism

- Adams 12 Five Star Schools (Colorado)
- Allentown School District (Pennsylvania)
- East Irondequoit Central School District (New York)
- El Segundo Unified School District (California)
- Elizabeth Forward School District (Pennsylvania)
- Hudson City School District (New York)
- Lynwood Unified School District (California)
- Mount Vernon School District (New York)
- Mountain View Whisman Schools (California)
- NOLA Public Schools (Louisiana)
- Richland School District Two (South Carolina)
- Roselle Public Schools (New Jersey)
- Spokane Public Schools (Washington)
- Springfield City Public Schools (Ohio)
- Suffern Central School District (New York)
- **Wilmington Learning Collaborative (Delaware)**



2024-2025 Teacher Leadership Design Fellowship



The Experience

- Communities of Practice
- Experiential Learning
- Coaching and Support
- Professional Development Leads
- Design Lab Participants

60 Applicants!

ELT Network Convening - Register by July 15

The Wilmington Learning Collaborative (WLC) and the Delaware State Education Association (DSEA) present:

ELT NETWORK CONVENING



We invite all recent and new Educator Leader Team (ELT) members from across our 9 WLC schools to join us on Wednesday, July 31 at the Hyatt Place Wilmington Riverfront. Together, we will gather for a day of collaboration, capacity building, and visioning for the year ahead.

Agenda

Breakfast

Welcome & Event Kickoff

Work Session I: Shared Decision-Making

Lunch & Panel Discussion: Reflections on Year 1

Work Session II: Building Trust

Work Session III: ELT Guidance Document

Close & Action Commitments

Register by July 15.



Our goal is to strengthen the ability of our Educator Leader Teams to drive innovation and change by providing structured spaces for cross-school collaboration and ongoing professional learning.

This summer's convening will launch a series of quarterly gatherings, virtual and/or in-person, throughout the school year.



All recent and new Educator Leader Team (ELT) members across WLC schools are invited to gather for a day of collaboration, capacity building, and visioning for the year ahead.

Work Sessions

I Shared Decision-Making

II Building Trust

III ELT Guidance Document

Panel Discussion

Reflections on Year 1 of the ELT Journey



Strategic Data Project (SDP) Fellowship

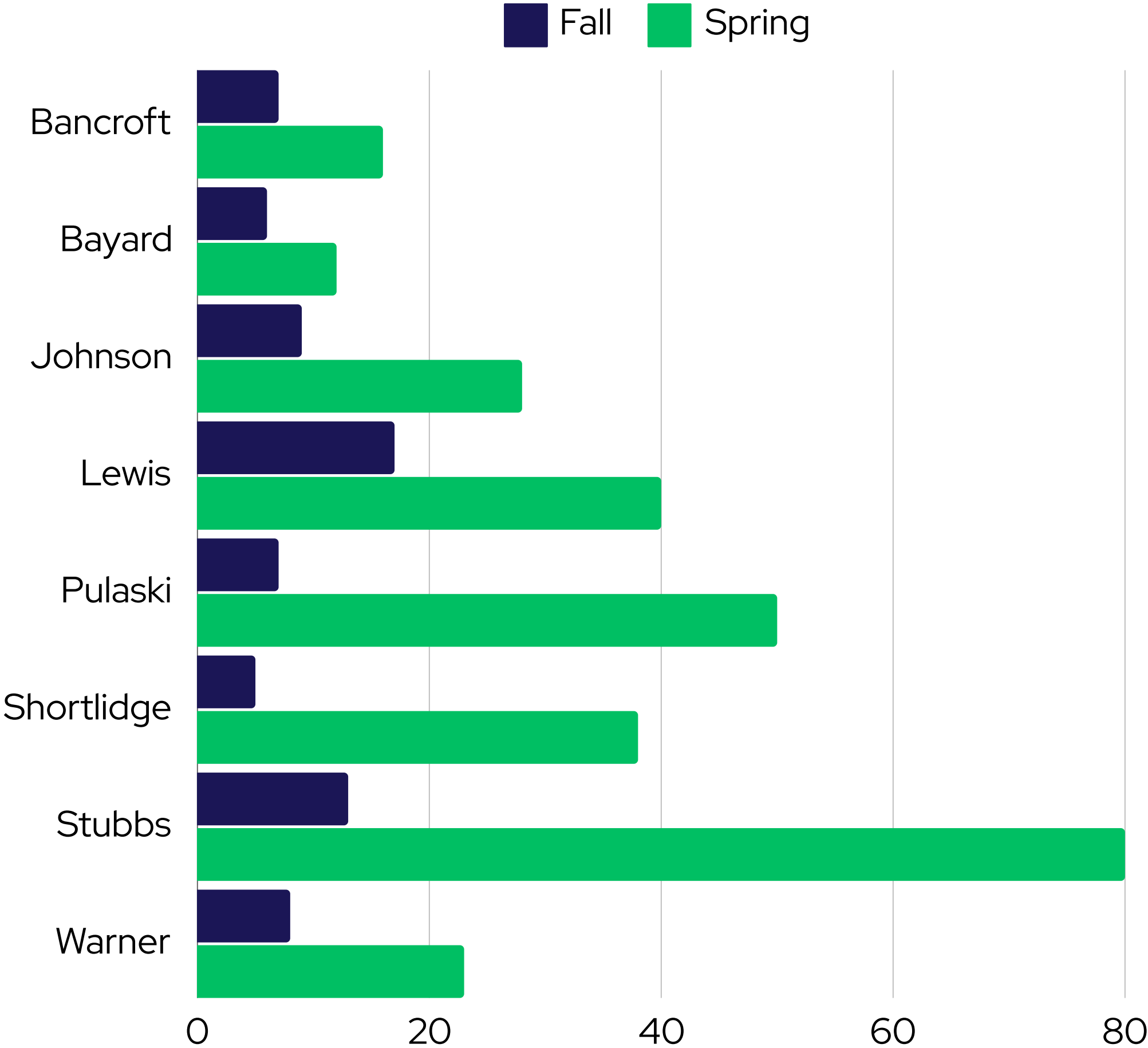
WLC, in partnership with the Delaware Department of Education, will participate in the SDP Fellowship, **a two-year fellowship that embeds skilled data analysts in education agencies to transform data use from the inside.**

The WLC SDP Fellow will...

- **Join the WLC Team in Fall 2024** and lead a transformative data project
-
- Support the WLC in accelerating the use of data in service of student success.
- Be trained to communicate findings to leadership to **improve evidence-informed decision-making.**
- Be supported by Harvard faculty and industry experts to collect the right data and conduct the right analyses in real time.



Fall to Spring Reading Proficiency (iReady)

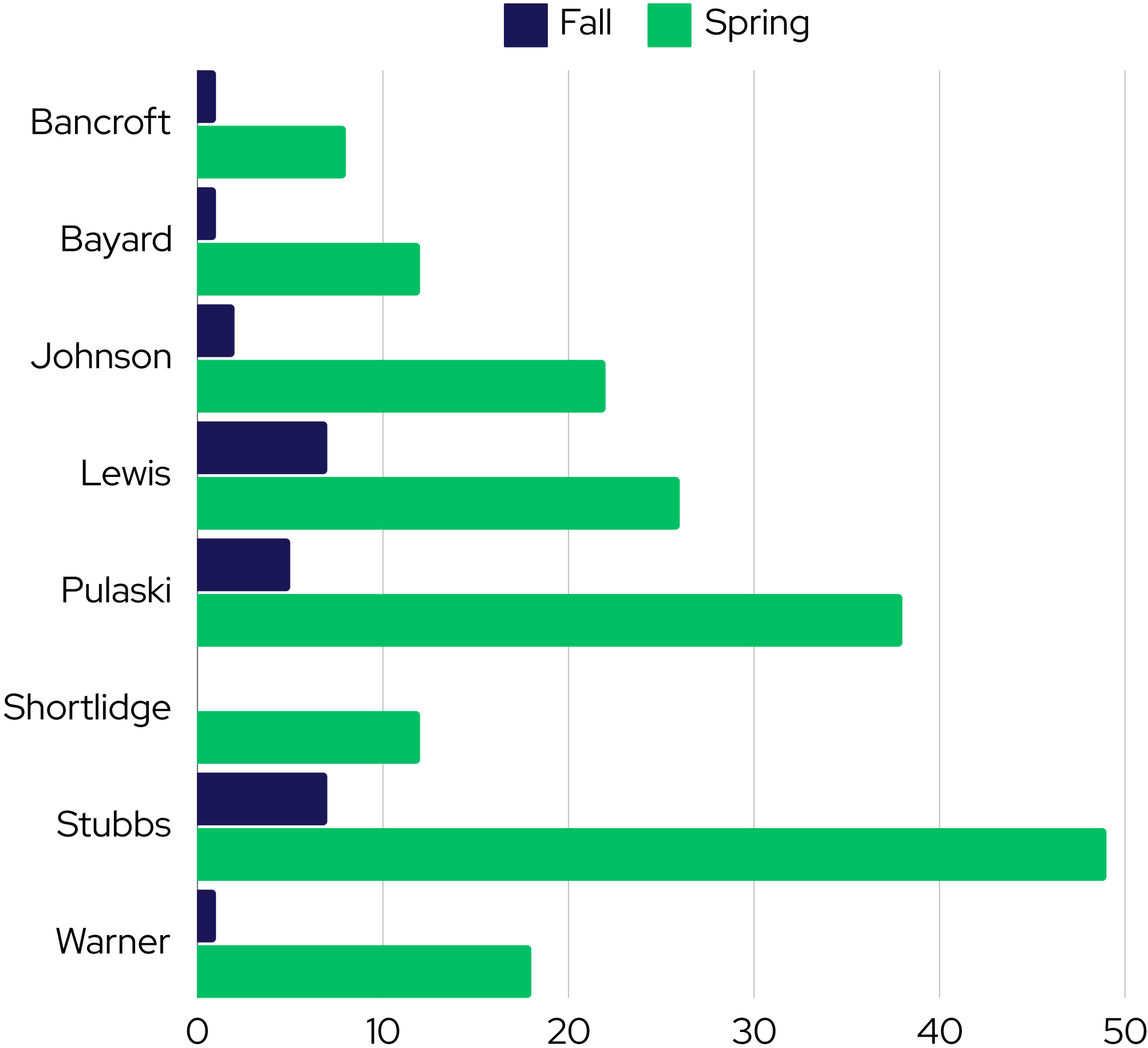


Our youngest learners made some of the greatest gains.

Our largest WLC schools, both Grade 1 through 8 models, made minimal gains.



Fall to Spring Mathematics Proficiency (iReady)



All WLC schools made gains in both content areas.

The increase in the number of students proficient in Reading, significantly outpaced Math results.

The number of students entering high school multiple grade levels behind heightens our focus on supporting our teaching and learning systems.



8th Grade Graduates - Reading Proficiency (iReady)

On Grade Level
7%

One Year Behind
11%

2 Years Behind
2%

3+ Years Behind
65.7%

3+ Years Behind
80%

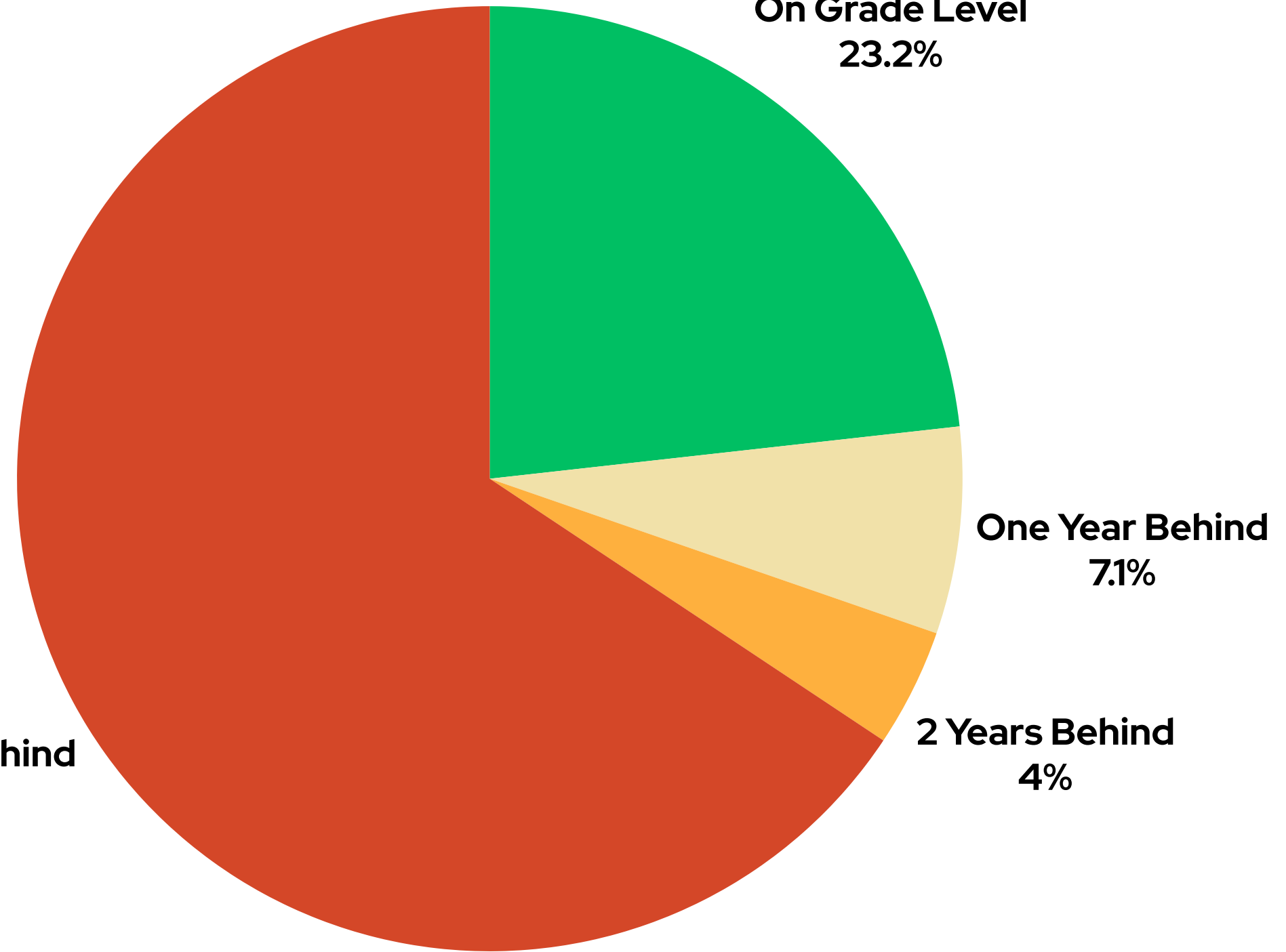
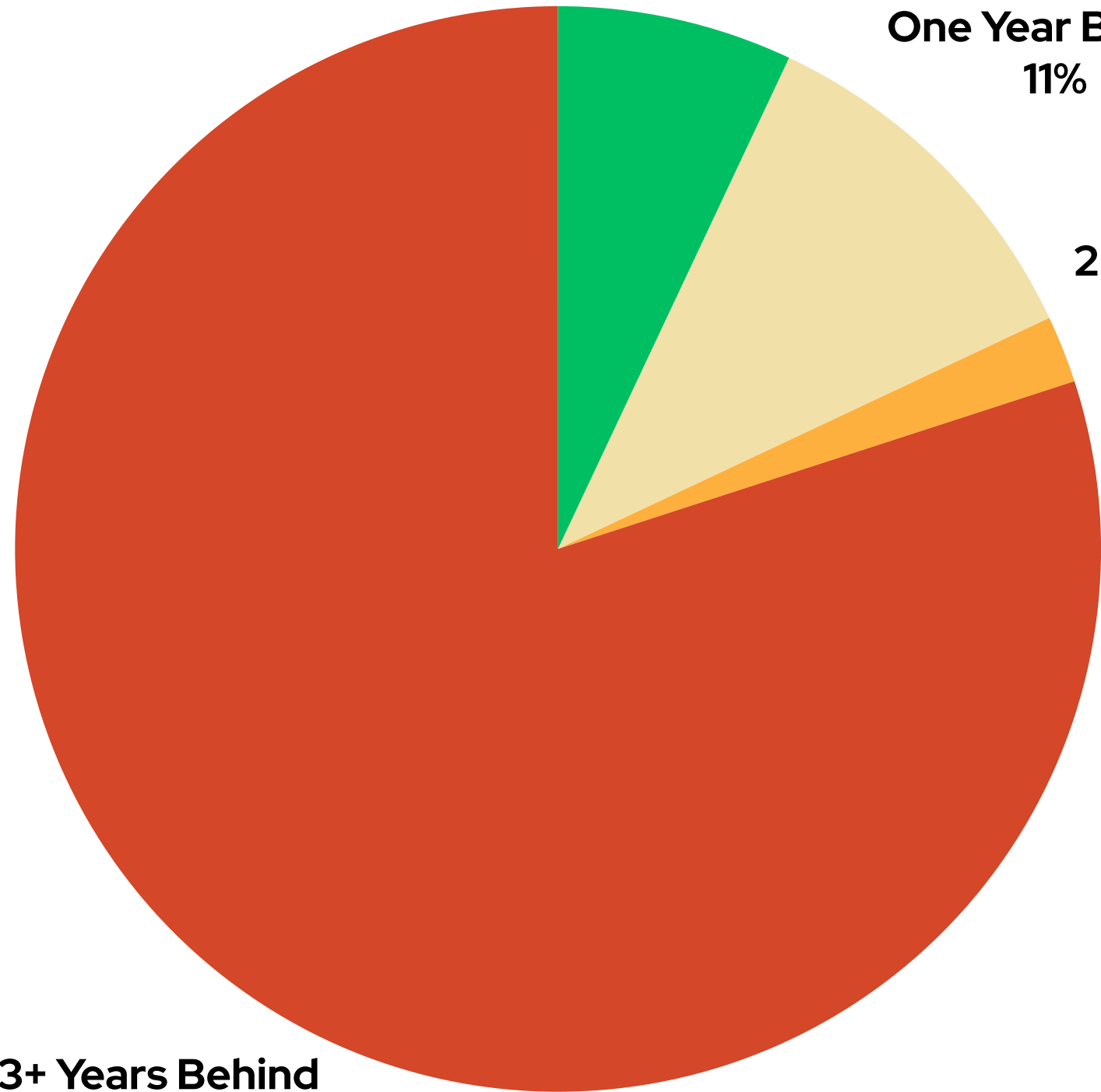
Bancroft

On Grade Level
23.2%

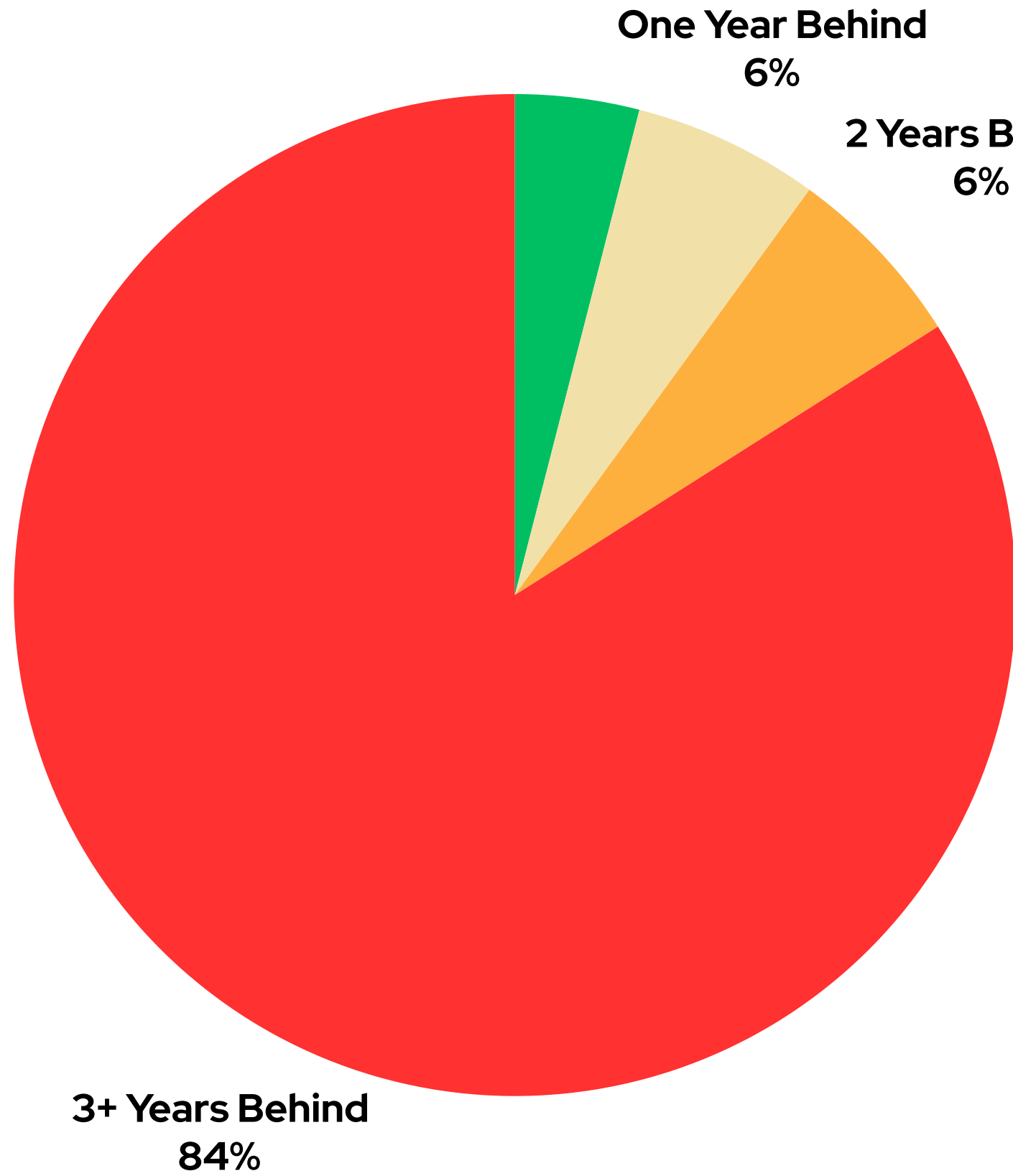
One Year Behind
7.1%

2 Years Behind
4%

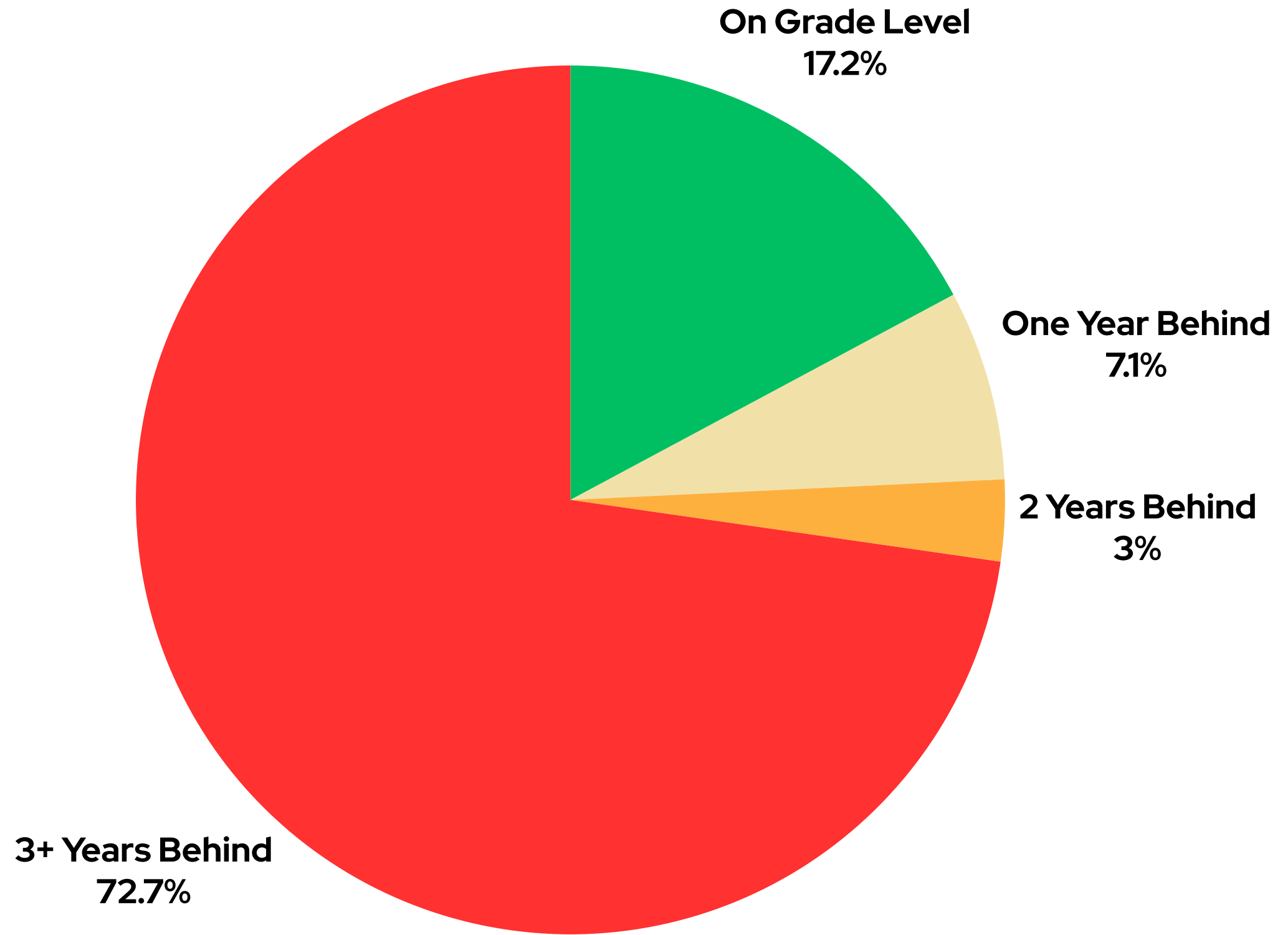
Bayard



8th Grade Graduates - Mathematics Proficiency (iReady)



Bancroft



Bayard

From Awareness to Action

- ✓ **Professional learning investments that deepen curriculum knowledge, increase instructional leadership capacity, and support rapid improvement cycles**
- ✓ **Strengthening our Educator Leader Teams through quarterly network convenings, capacity building, and streamlined funding support.**
- ✓ **Engaging our principals and assistant principals in cohort learning models.**
- ✓ **Designing Community Councils that are carefully trained and resourced to activate authentic engagement strategies.**
- ✓ **Investing in data-informed strategies that advance educators towards certification, including Praxis support, teacher residencies, and teacher leadership models.**

Activating the WLC

Big Shifts

Students First (SF)

**Action
Commitments**

Commitment Continuously develop and invest in all adults serving the children in WLC schools.

**Shared
Priorities**

SF.7 WLC Teacher Leadership Design Fellowship will offer a yearlong leadership development and design lab journey for experienced educators (4yrs+) in WLC schools.



Let Your Voice Be Heard!

WLC Families, Teachers, & School Staff!

As this year draws to a close we would like to take one last opportunity to hear from you as we plan for next year. **We are launching our first WLC school feedback survey.** This is your opportunity to share your open and honest feedback on your experience this academic year and to help inform plans for next school year.

The survey is anonymous! The information you provide will be used to inform how the WLC deploys resources, develops partnerships, and implements school support in service of our three Big Shifts: *Students First, Connected Schools, Purposeful Partnerships.*

The survey is now open and will close on Sunday, June 30, 2024. We estimate the survey to take approximately 10 minutes to complete. **Please scan the appropriate QR code to access either the Teacher, Staff or Family Survey.**

We value your time and greatly appreciate you sharing this feedback. WLC families who complete the survey will be entered into a raffle drawing and have the chance to win 1 of 3 Apple digital devices.

In addition, a special end of year breakfast will be provided to the three (3) WLC schools with the highest teacher/staff survey completion rates.



About the WLC

The **Wilmington Learning Collaborative (WLC)** is a voluntary network of schools in Wilmington across multiple school districts. Currently composed of nine unique school communities representing three local public school districts, the WLC will serve approximately 3,000 students in grades PreK through 8th grade. The Collaborative's goal is to create consistency for students, empower educators, school leaders, and communities, and improve outcomes for students in city of Wilmington schools.

End of Year Experience Survey

- Audience
 - WLC Families & School Staff
- Survey Window
 - May 21 – June 30
- Time to Commitment
 - 10 minutes
- Incentives
 - Apple Digital Device Raffle
 - Back to School Breakfast

