

Wilmington Learning Collaborative

Executive Director's Report

Students First. Connected Schools. Purposeful Partnerships.

August 20, 2024

Dr. Laura Burgos

Educator Pathways: Praxis Test Prep



Summer prep session will evolve into a fall cohort.

Participants have access to online tutoring support.



Summer Learning 2024 - Reading Assist

WLC+Reading Assist – Summer 2024 Report

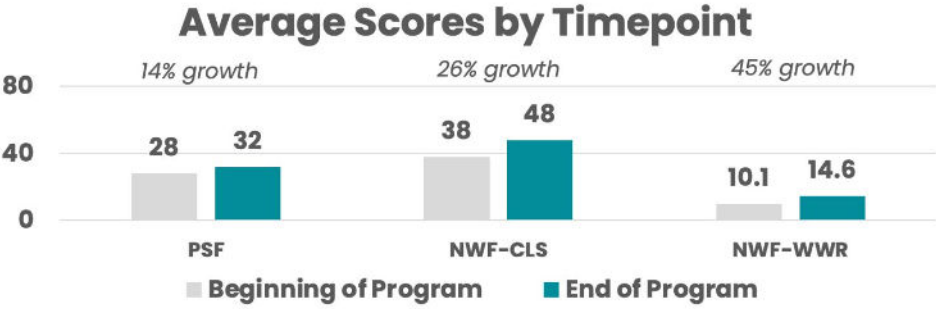


Reading Assist

Student Reading Growth (Grades 1-6)

Average scores **increased for 3 out of 3 measures** for students in Grades 1 and higher.

90% of G1+ students showed growth in at least one measure.



Note. Data reflect students tested at both beginning- and end-of-program.



Summer Learning 2024 - Reading Assist

WLC+Reading Assist – Summer 2024 Report

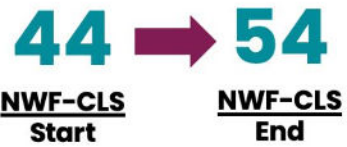


Student Reading Growth by Site Highlights – Grades 1-6



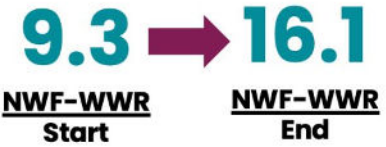
Bancroft

23% growth



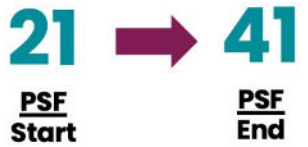
Bayard

73% growth



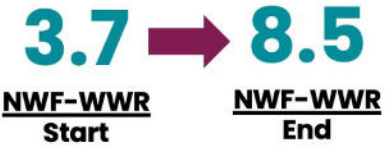
Pulaski

95% growth



Stubbs

130% growth



Summer Learning 2024 - Reading Assist

WLC+Reading Assist – Summer 2024 Report



Reading Assist Data Takeaways – Grades 1-6

- Students **grew in three out of three measures** of foundational literacy.
- Reading Assist **exceeded the growth goal** of 70% showing growth in at least one measure, with **90% showing growth**.
- Growth in each measure **persists across grade, site, and demographic groups**, with several noted growth areas in PSF across categories.
- Additional highlights include:
 - 96% of 1st graders grew in at least one measure, as did 93% of 3rd graders.
 - 90% of students at Bancroft, and 91% at Bayard grew in at least one measure.
 - 88% of girls, and 100% of Latino students showed growth.

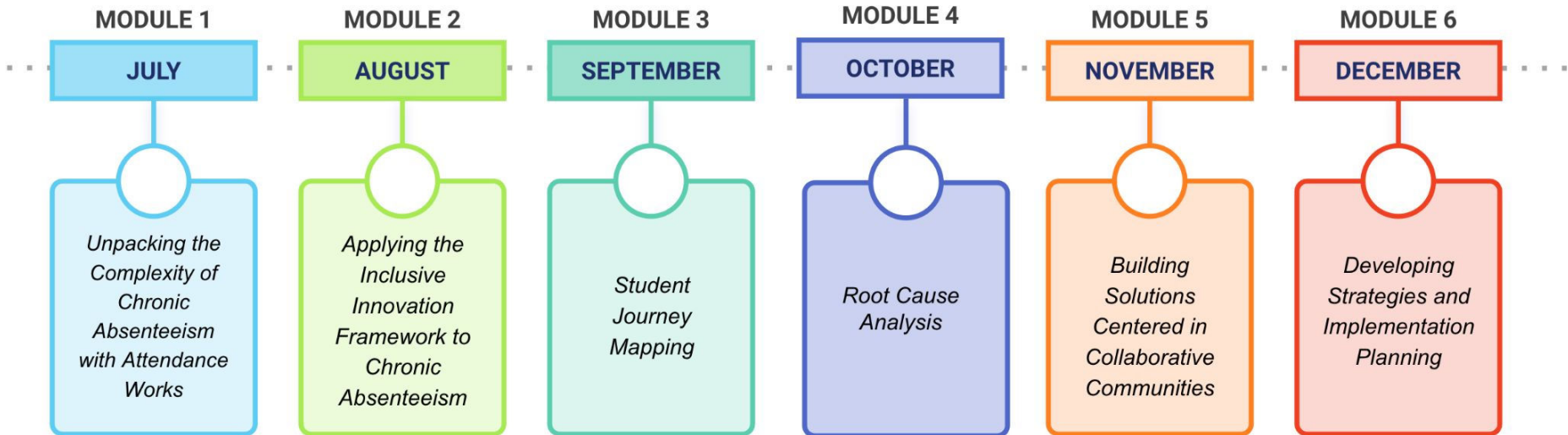
*Note. All Data available at the end of this report.

Chronic Absenteeism: *Insights and Innovations*



Chronic Absenteeism: *Insights and Innovations*

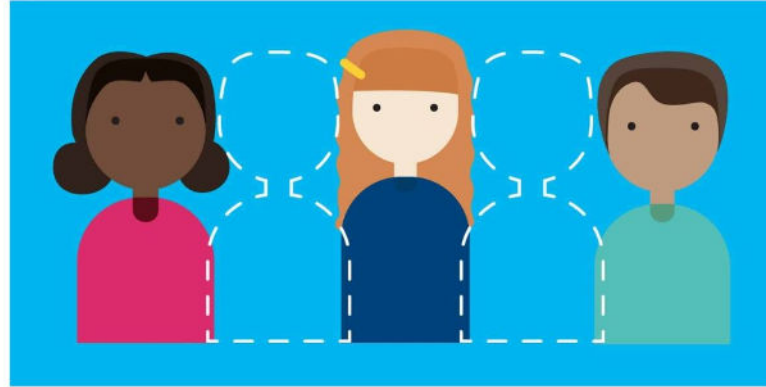
6-Month Cohort Engagement Overview



Defining Chronic Absenteeism

Chronic absenteeism is defined as missing 10% or more of school days for any reason—excused, unexcused absences and suspensions.

- Rates of chronic absenteeism have been increasing nationally
- Chronic absence in early grades are linked to lower reading proficiency
- By middle and high school, it is a learning indicator of dropout rates



Difference Between ADA, Truancy, & Chronic Absence

Average Daily Attendance (ADA)

- School level measure (not student level)
- Notices aggregate attendance at certain point in time (e.g., half-days, holidays, bad weather)
- Masks individual student chronic absences

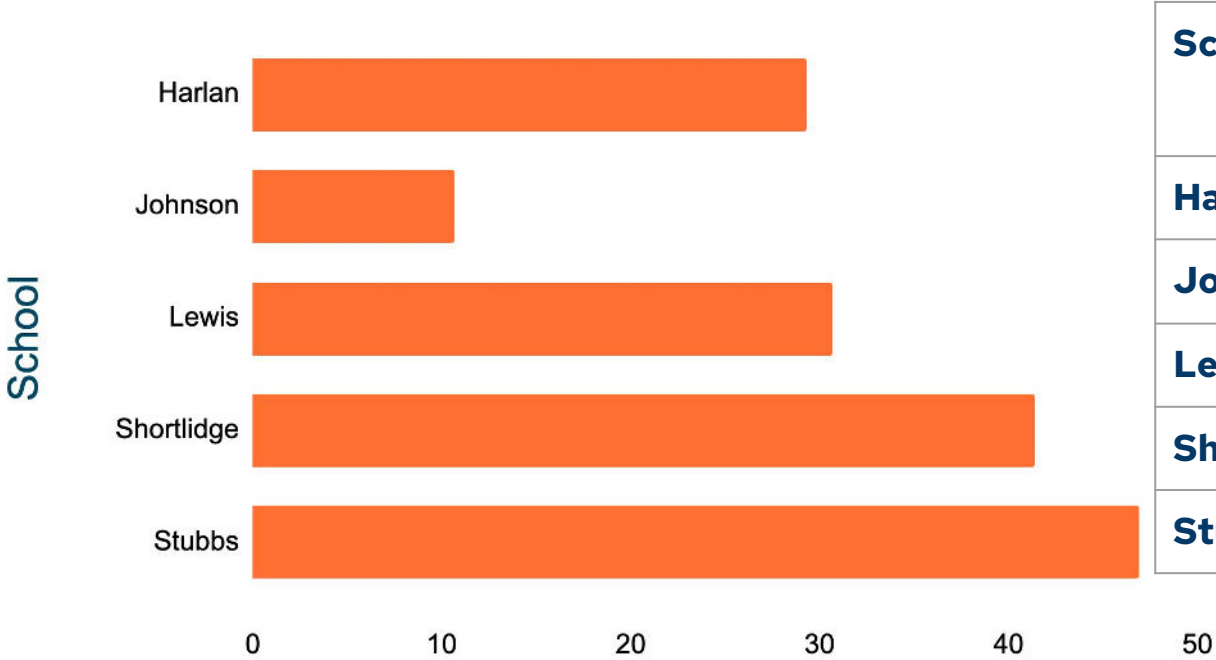
Truancy

- ▲ Counts **ONLY** unexcused absences
- ▲ Emphasizes individual compliance with school rules
- ▲ Uses legal, typically more blaming and punitive, solutions

Chronic Absence

- Missing 10% counts **ALL** absences (*excused, unexcused, & suspensions*)
- Emphasizes impact of missed days and the benefits of being present
- Uses preventative, problem-solving, trauma-sensitive strategies
- Cultivates family and student engagement

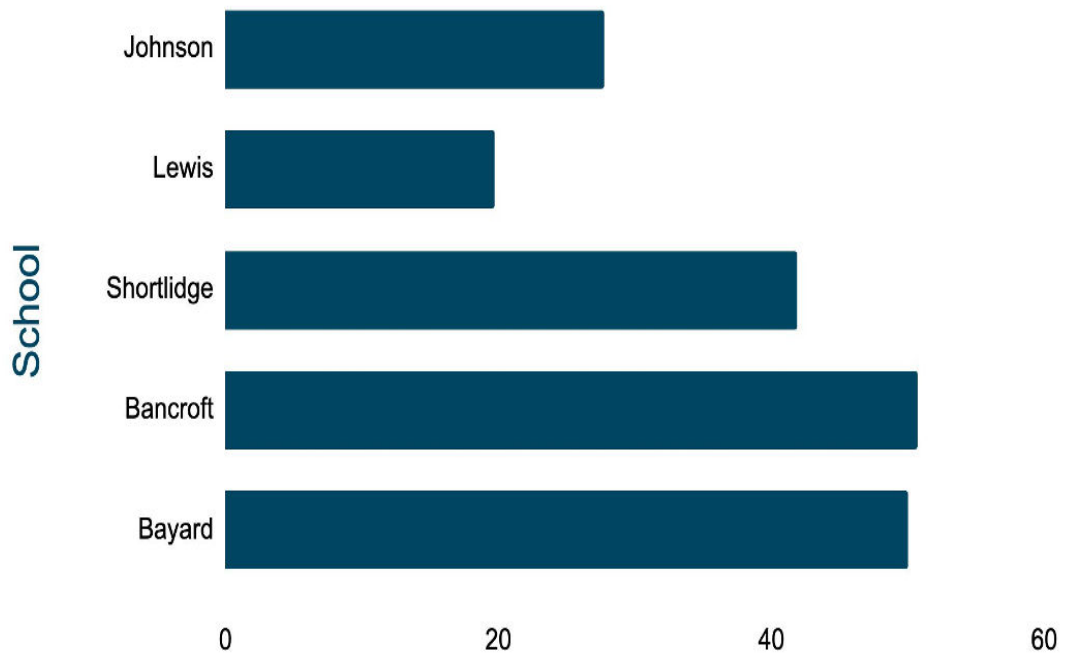
WLC Chronic Absenteeism Data: Grade K (2023)



School	# of Students	% of Students
Harlan	22	29%
Johnson	6	10%
Lewis	23	30%
Shortlidge	65	41%
Stubbs	84	46%



WLC Chronic Absenteeism Data: Grade 2 (2023)



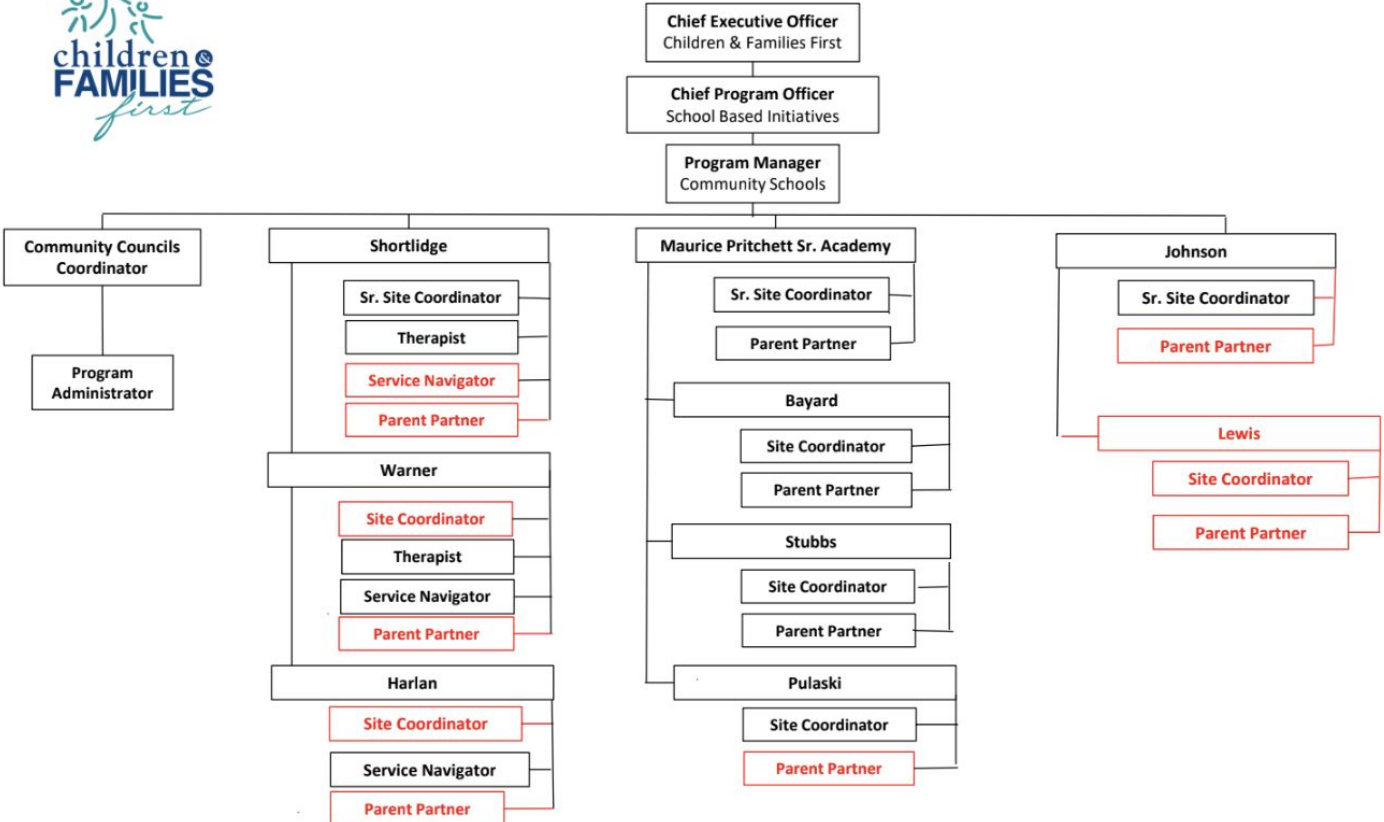
School	# of Students	% of Students
Johnson	15	27%
Lewis	13	19%
Shortlidge	67	41%
Bancroft	36	50%
Bayard	34	50%



Update: Site-Based Community Councils



2024 School-Based Initiatives Organizational Chart



Join Our Community Councils



PARENTS!

JOIN OUR COMMUNITY COUNCILS!

We are seeking dedicated parents and caregivers to join your school's Community Council. Help shape a positive school environment and advocate for the needs of student and families!

- ✓ **INFLUENCE IMPORTANT DECISIONS**
- ✓ **CHILDREN WELCOME**
- ✓ **FOOD PROVIDED**
- ✓ **PARTICIPATION INCENTIVES**



JOIN TODAY!



communityschools@cffde.org

OR



JOIN OUR COMMUNITY COUNCILS

Are you passionate about education and community support? Do you want to make a real difference in the lives of students across the district? Join our Community Councils to be a part of passionate team working to enhance the educational experience and well-being of children in our schools.

WHAT WE DO



COLLABORATE

Work with school staff to identify and address educational and supportive needs of students.



ENCOURAGE

Actively involve parents in the educational process and foster strong relationships between teachers, staff, parents, and the community.



RECOMMEND

Suggest initiatives to meet student needs, identify community resources, and offer feedback on policies and training.



ADVOCATE

Offer insight on school data and represent our schools to promote educational equity.

WHO WE'RE LOOKING FOR:

We seek a variety of perspectives and knowledge from parents, family members, community stakeholders, teachers, administrators, students, and more. No special skill or specific subject area knowledge is required, just your insight and life experience. Recruitment is ongoing!

Together, we can build a stronger, more supportive educational community!

GET INVOLVED TODAY!



communityschools@cffde.org

OR



Coming in September: WLC Wellness Wednesdays

Objectives:

- **Support Educator Well-being**
A dedicated time for teachers to relax and decompress.
- **Foster Community**
Informal session where teachers can exchange ideas.
- **Promote Healthy Lifestyles**
Healthy, plant-based appetizers, smoothies and fresh cold-pressed juices.
- **Enhance Mental Health**
Sound, breathing and meditation exercises.

Details

- September kickoff
- Last Wednesday of the month
- Monthly subgroup focus
- RSVP required



Save the Date: Fall ELT Network Convening

Date: Saturday, October 12

Location: Delaware Museum of Art

Time: 9:00 AM to 1:00 PM



All Educator Leader Team (ELT) members across WLC schools are invited to gather for a morning of collaboration, capacity building, and visioning for the year ahead.

Sample Work Sessions

- I Managing Conflict
- II Innovation Fund Project Pitches
- III ELT Guidance Document

Breakfast, Lunch, & Childcare Provided



Welcome, Mrs. Andrea Collins-White!



Principal Finalists Meet & Greet for Stubbs Early Education Center

We are excited to invite you to meet the candidates for our next principal! Join us for an opportunity to meet the finalists, hear their visions for the future of Stubbs Early Education Center, and ask your questions.

**Wednesday,
August 7, 2024
6:00 - 7:30 PM**

**Stubbs Early Education Center
Library, 1100 N Pine St.
Wilmington, DE 19801**

Have questions for the candidates? We want to hear from you! Scan the QR code below to submit your questions in advance or visit us at wlc-de.org.



Don't miss this opportunity to be part of the decision-making process and support the selection of our new principal. We look forward to seeing you there!



**Scan the QR code to provide
us with your candidate
feedback!**



New WLC-CSD School Leaders



Eunique Lawrence
*Director of Teaching &
Learning*

Dr. Tongela Ginyard
Assistant Principal



Andrea Collins-White
Principal



Dr. Deirdra Joyner
*Deputy Superintendent
& Chief Academic
Officer*

Dr. Sharon Hill
Assistant Principal



August 23 Ribbon Cutting & Block Party



Maurice Pritchett Sr. Academy Ribbon Cutting & Block Party

Friday, August 23, 2024 | 2-5 PM
600 E. 7th Street, Wilmington, DE.



**Friday, August 23
2:00 to 5:00 PM**

**RSVP Link:
www.christinak12.org/RSVP**





FOLLOW US FOR THE LATEST UPDATES:



@wilmingtonlearningcollaborative



@wlc_de



@wilmington-learning-collaborative



@wlc_de



wlc-de.org/#email



Wilmington Learning Collaborative

163 followers

2w · 🌐

WLC community, make sure to stay connected with us wherever you are! Get the latest resources and exciting updates online by following us across all platforms.

👉 Facebook: <https://lnkd.in/eMn82 UE>

👉 Instagram: <https://lnkd.in/eA7MtXC2>

👉 LinkedIn: <https://lnkd.in/eSicS4cY>

👉 X (Twitter): https://x.com/wlc_de

Prefer to get your news via email? Visit <http://wlc-de.org/#email> and subscribe to receive emails from the WLC! 📧

#WilmingtonLearningCollaborative

#StrongSchoolsStrongCommunity

#WLCDE

#WLCSchools

#ConnectedCommunities

#StudentsFirst

#ConnectedSchools

#PurposefulPartnerships

#WLCWilmingtonDE

#WLCExcellence

#WilmingtonWill

#WilmingtonDE





**WILMINGTON
LEARNING
COLLABORATIVE**

