

Wilmington Learning Collaborative

Executive Director's Report

Students First. Connected Schools. Purposeful Partnerships.

September 17, 2024

Dr. Laura Burgos

Approved WLC FY25 Budget Narrative

Year 3 - July 1, 2024 through June 30, 2025	
Total FY25 Allocation	\$15,940,051
Year 2 (Operations Carryover)	\$715,263
Year 2 (Programmatic Carryover)	\$5,224,788
Year 3 Allocation	\$10,000,000

The WLC FY25 Budget Narratives have now been approved by the Department of Education, the Office of Management and Budget, and the Joint Finance Committee.

An **amended budget** will be submitted following tonight’s discussion.



Amended WLC FY25 Budget Narratives

Year 3 Funding Breakdown		Jul 1, 2024 - June 30, 2025	
	Approved Budget	Amended Budget	
Expanded Learning Time	\$2,975,000	\$2,456,000	
ELT Innovation Fund	\$4,600,000	\$4,600,000	
Professional Development	\$2,250,000	\$1,800,000	
Curriculum Supports	\$1,350,000	\$1,350,000	
Educator Pathways	\$1,027,500	\$1,027,500	
School Leader Recruitment & Retention	\$0	\$124,000	
School Culture & Climate	\$225,000	\$225,000	
Family Advocacy & Engagement	\$90,000	\$90,000	
Program Budget Total	\$12,517,500	\$11,672,500	
Operational Budget Total	\$3,418,824	\$4,263,824	
Grand Total	\$15,936,324	\$15,936,324	



Alma Advisory Group

Champions for Organizational Success

We help organizations to find, retain, and empower executive-level talent to do great work.



Executive Search



Superintendent Search



Leadership Pipeline



Principal Support & Supervision



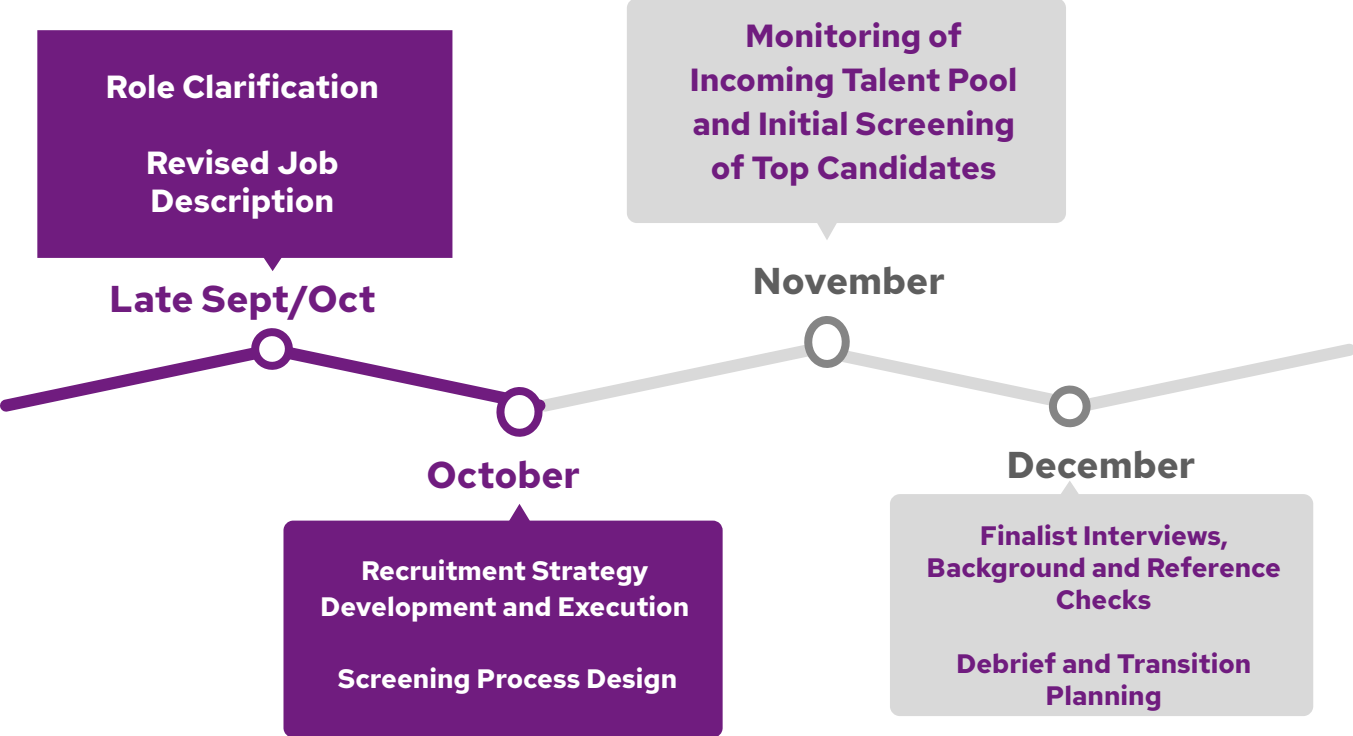
Talent Management



Coaching, Training & Facilitation



School Leader Recruitment - Bayard & MPA



Teacher Leader Design Fellowship Kickoff



37 Teacher Leader Design Fellows gathered at Maurice Pritchett Sr. Academy on Sept 12 to kick off the TLDF journey!



Teacher Assessment Preparation Program (TAPP)

TAPP provides **in-person tutoring** to support educators preparing to take the Elementary & Secondary Praxis Exams and includes access to:

- **online test prep platform**
- **peer study groups**
- **tutoring on content areas** and **test prep strategies**

Program is expected to run **October 21 through December 5** offering tutoring sessions **two days a week**.

Contact Carly Highsmith, Director of Educator Pathways, to learn more.



College Unbound

College Unbound (CU) is an innovative, accredited college focused on **adult learners** who have faced significant barriers to attending college and offers a unique form of professional development ensuring every student has access to an affordable & flexible Bachelor's Degree program.

The CU and WLC partnership will focus on **staff members at WLC schools who have acquired less than 60 college credit hours.**

Graduates will:

1. Be supported in entering an **ARTC program to pursue teaching certification.**
2. Commit to a **teaching placement within a WLC school.**

Contact Carly Highsmith, Director of Educator Pathways, to learn more.

Vision to Learn (VTL)

The VTL program uses a **mobile vision clinic** to visit students where they are every day – at school– thereby increasing access to critical eye exams and prescription glasses.

Proposal includes:

- Vision screening of all students at selected school sites.
- Basic vision examination for screening-identified students
- Prescription and fitting of glasses
- Provision of glasses from Provider's available selection.
- Glasses will be delivered on a separate date approximately three weeks after exam.
- As appropriate, referrals to the school nurse for additional care.



Vision to Learn 2023-2024 Services

Site	'24 - '25 Exam Total	WLC-Funded Exams	Clinic Date
Harlan	20	20	Dec '24
MPA	90	25	Jan '25
Bayard	100	90	Oct '24
Pulaski	50	25	Feb '25
Stubbs	40	25	Apr '25
Johnson	25	20	Apr '25
Lewis	50	20	Feb '25
Shortlidge	50	25	Oct '24
Warner	50	25	Oct '24
	475	275	



October 12 ELT Network Convening

The Wilmington Learning Collaborative (WLC) presents:

Fall 2024 ELT NETWORK CONVENING



We invite all Educator Leader Team (ELT) members from across our nine WLC schools to join us on Saturday, October 12 at the Delaware Art Museum, 2301 Kentmere Pkwy, from 9:00 AM to 1:00 PM.

We will gather for a morning of capacity building, experience sharing, and brainstorming in service of ELTs.

**Breakfast, lunch, and childcare (ages 4 & up) with museum tours will be provided.*

Register by October 4.



Agenda

Breakfast
Welcome & Introductions
Work Session I: Managing Team Conflict
Work Session II: Overview of ELT Innovation Fund
Work Session III: Agenda Design & Consensus Building
Lunch & Close

Our goal is to strengthen the ability of our Educator Leader Teams to drive innovation and change by providing structured spaces for cross-school collaboration and ongoing professional learning.

This fall's convening is the next installment in our series of quarterly gatherings designed to foster cross-school collaboration.



Register by October 4

Location Delaware Art Museum

Time 9:00 am to 1:00 pm

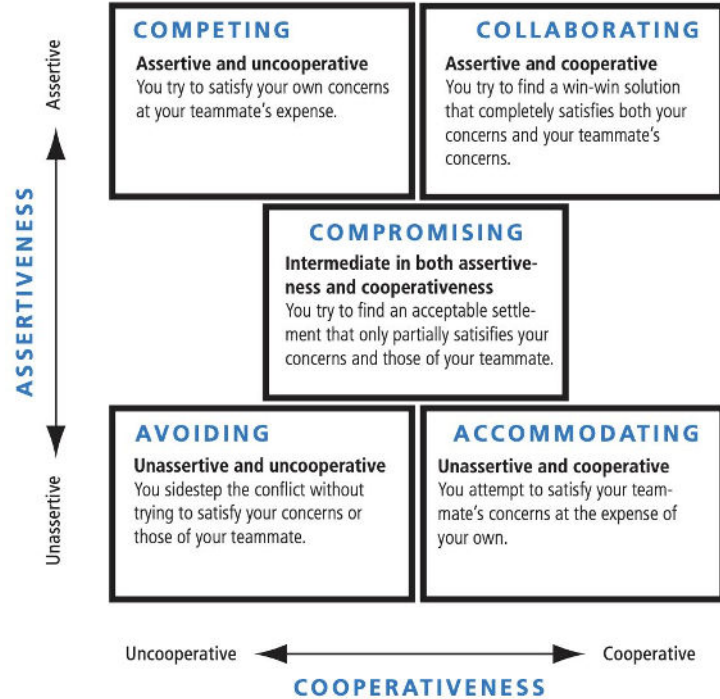
Breakfast, lunch, and childcare provided.

Work Sessions

- I. Managing Team Conflict
- II. Overview of ELT Innovation Fund
- III. Agenda Design
- IV. Building Consensus



ELT Network Convening Focus: Managing Conflict



Session Objectives:

- Understand the source of conflicts and one's own conflict style, and how to increase individual effectiveness on a team
- How to deal constructively with teammates with different styles

All participants will complete the TKI assessment, receive their profile, and take home the *Introduction to Conflict and Teams* guide!



Wellness Wednesdays - School Leader Edition

SCHOOL LEADER EDITION



WELLNESS WEDNESDAYS

Location: The Juice Joint 2.0, 102 S. Union Street, Wilmington, Delaware 19805

Date: September 25 from 5:00 to 7:00 PM



Support Leader Well-being



Foster Community



Promote Healthy Lifestyles with
nutritious eating



Enhance Mental Health
with yoga

ACTIVITIES

- **Lite Bites:** A selection of healthy, plant-based appetizers to enjoy.
- **Smoothies and Fresh Cold-Pressed Juices:** Nutritious beverages to energize and refresh.
- **Leader Wind Down:** A dedicated time for education leaders to relax and decompress.
- **Best Practice Sharing:** An informal session where leaders can exchange ideas and strategies.
- **Mobility Stretching:** Guided sessions focusing on mobility and gentle stretching exercises to improve flexibility and reduce tension.
- **Sound, Breathing and Meditation Exercises:** Techniques to promote mindfulness and mental clarity.



RSVP by September 18 using the QR Code or by visiting us at wlc-de.org/wellness-wednesday-september-25-2024-rsvp



Welcome Will Zemp, SDP Data Fellow!

William (Will) Zemp is an international education professional with six years of experience in the ESL sector in the Middle East and North Africa (MENA).

Will holds a Master of Science in Education from the University of Pennsylvania.

A teacher by trade, Will is **passionate about teachers' rights and recognizing educators as key agents of change** within education systems.

His specific areas of interest lie at the intersection of emergent technology, impact assessment, and educational development with regional focuses across the globe.



Growing the WLC Team

Senior Administrative Assistant

- October contract approval
- November 1 start date

Data Fellow

- Joined Sept 16
- 2-Year Commitment
- SDP Orientation | October 22-23 | Cambridge, MA

Director of Professional Learning

- Reposting
- Exploring contractor to lead design and execution of Summer WLC Educator Symposium (tentative)





FOLLOW US FOR THE LATEST UPDATES:



@wilmingtonlearningcollaborative



@wlc_de



@wilmington-learning-collaborative



@wlc_de



wlc-de.org/#email



Wilmington Learning Collaborative

163 followers

2w · 🌐

WLC community, make sure to stay connected with us wherever you are! Get the latest resources and exciting updates online by following us across all platforms.

👉 Facebook: <https://lnkd.in/eMn82 UE>

👉 Instagram: <https://lnkd.in/eA7MtXC2>

👉 LinkedIn: <https://lnkd.in/eSicS4cY>

👉 X (Twitter): https://x.com/wlc_de

Prefer to get your news via email? Visit <http://wlc-de.org/#email> and subscribe to receive emails from the WLC! 📧

#WilmingtonLearningCollaborative

#StrongSchoolsStrongCommunity

#WLCDE

#WLCSchools

#ConnectedCommunities

#StudentsFirst

#ConnectedSchools

#PurposefulPartnerships

#WLCWilmingtonDE

#WLCExcellence

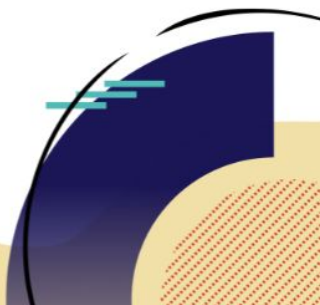
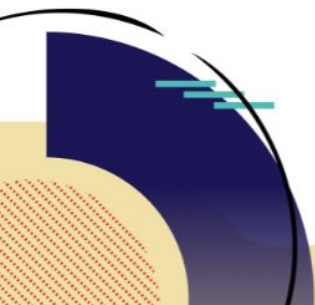
#WilmingtonWill

#WilmingtonDE





**WILMINGTON
LEARNING
COLLABORATIVE**



Alma Advisory Group

Champions for Organizational Success

We help organizations to find, retain, and empower executive-level talent to do great work.



Executive Search



Superintendent Search



Leadership Pipeline



Principal Support & Supervision



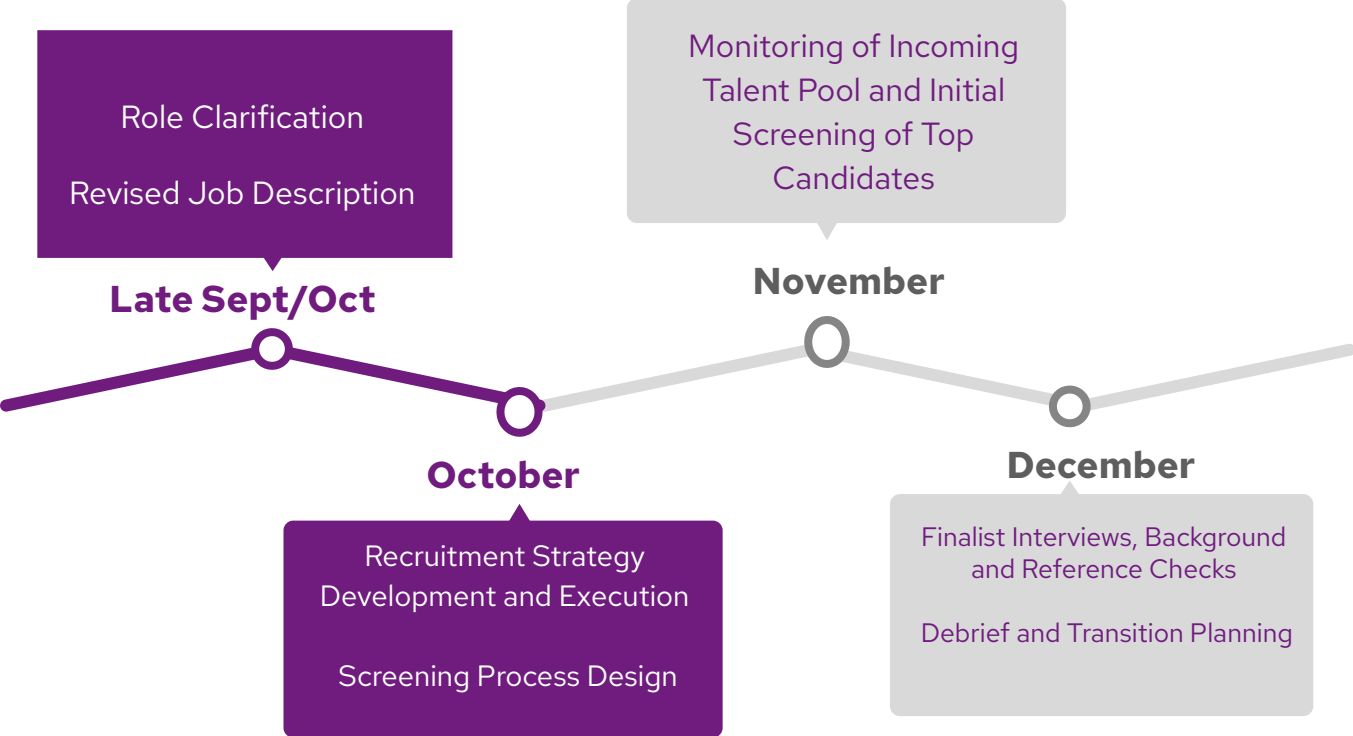
Talent Management



Coaching, Training & Facilitation



School Leader Recruitment - Bayard & MPA



Additional School Leader Compensation

	Base Index:	\$ 98,618	Teacher Masters + 45	
Position	Responsibility Index	Min	Mid	Position
Deputy Superintendent	1.95	\$ 180,767	\$ 186,399	\$ 192,305
Assistant Superintendent	1.7	\$ 157,592	\$ 162,501	\$ 167,651
Chief Financial Officer	1.7	\$ 157,592	\$ 162,501	\$ 167,651
Senior Director	1.65	\$ 152,957	\$ 157,722	\$ 162,720
Director	1.6	\$ 148,321	\$ 152,942	\$ 157,789
Supervisor	1.5	\$ 139,051	\$ 143,384	\$ 147,927
Principal - High School	1.5	\$ 139,051	\$ 143,384	\$ 147,927
Principal - Middle	1.48	\$ 137,197	\$ 141,472	\$ 145,955
Principal - Elementary	1.45	\$ 134,416	\$ 138,604	\$ 142,996

The WLC and CSD HR team have discussed a \$15,000 stipend for each new leader upon successful completion of their first full year in the role, as evidenced by the DPAS-II evaluation.

