

Wilmington Learning Collaborative (WLC) at

# **Pulaski Early Education Center**

**Students First. Connected Schools. Purposeful Partnerships.**

December 17, 2024

# Pulaski Mission and Vision



**Mission Statement** - Pulaski Early Education Center fosters a safe, inclusive, and rigorous learning foundation to inspire and impact all learners.

**Vision Statement** - Pulaski Early Education Center empowers students to become lifelong learners, thinkers, and productive citizens.



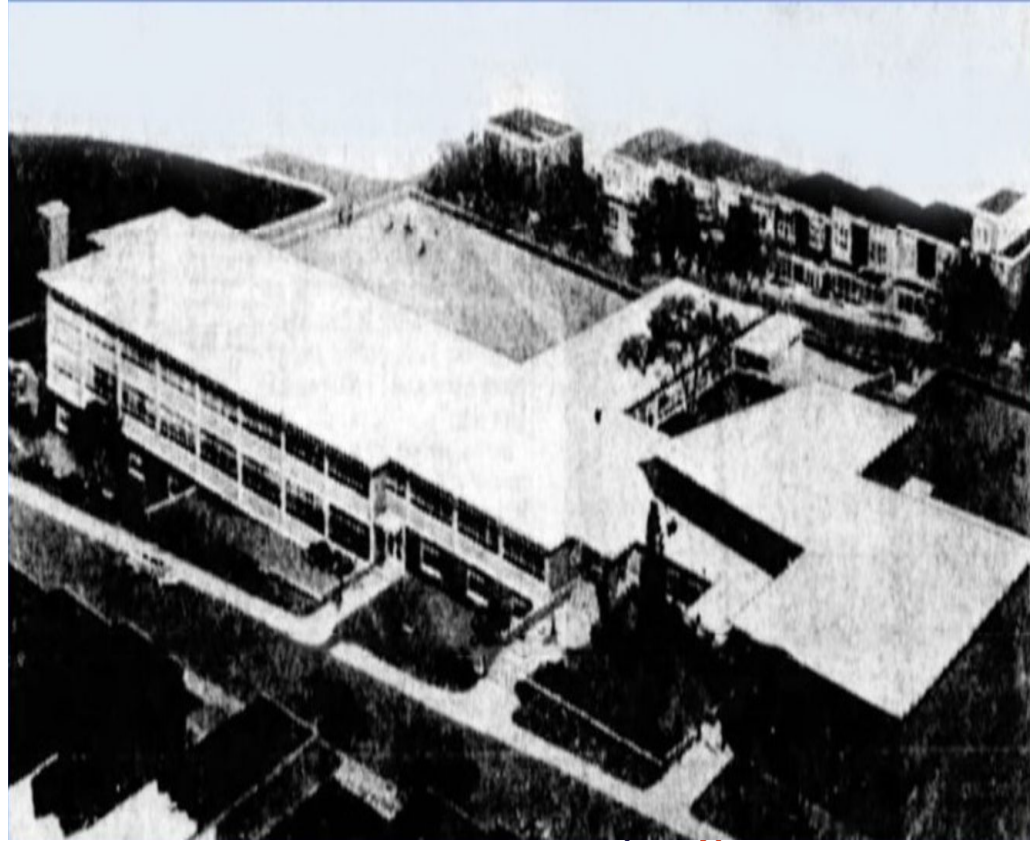
**College and Career Readiness Begins in Kindergarten**



# Historical Context

## History of Pulaski

- Cedar Hill School opened in 1958 to replace Public School #19.
- In 1976, it was renamed Pulaski School.
- Pulaski Elementary School closed Summer 2020 due to reconfiguration of CSD City Schools
- Reopened - September 2023 as Pulaski Early Education Center; serving preschool, prek and kindergarten



# Pulaski Peacocks



**P**ositive  
actions  
**R**espect  
**I**ntegrity  
**D**iscipline  
**E**xcellence



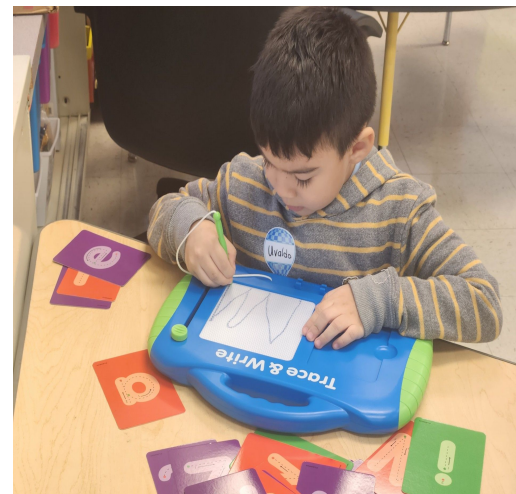
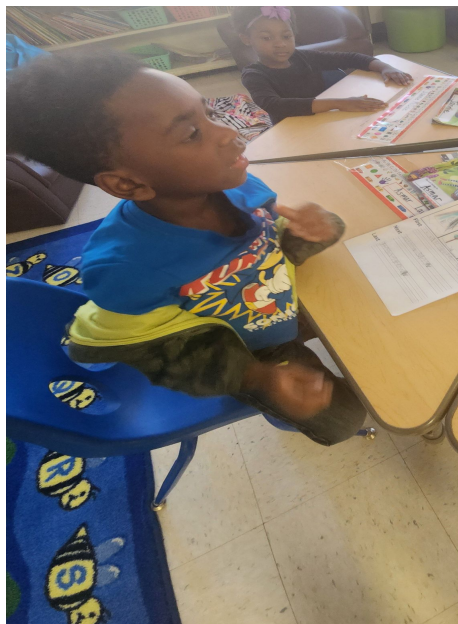


# Data Snapshot

Enrollment	126
% Special Education	K 18% PreK 46%
% MLL	15%

## Attendance

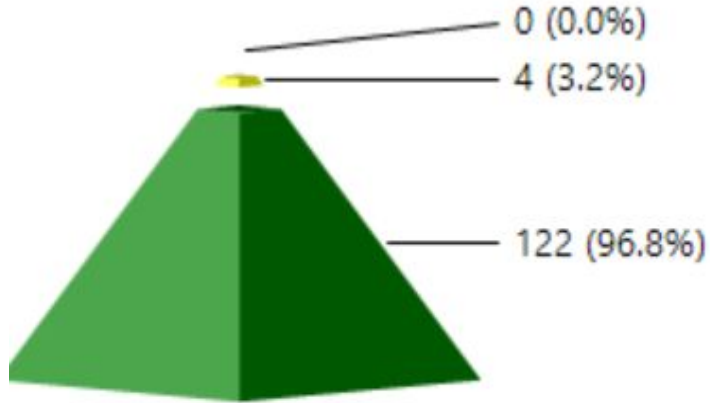
	SY 23-24	SY 24-25
On track attendance	87.42%	92.21%



# Data Snapshot

## SY2025 Discipline Incidents Pulaski Early Education Center

(click pyramid or legend for detailed list)    only includes active students



	Range	Student Count	Percent
	6+	0	0.0%
	2 to 5	4	3.2%
	0 to 1	122	96.8%
	Total	126	100.0%



# iReady

	Fall 23-24	Spring 23-24	Fall 24-25
iReady Reading	5%	50%	9%
iReady Math	2%	38%	4%

**Proficiency as demonstrated on the iReady diagnostic assessment**

- **iReady personalized instruction (Homework)**
- **Reading Assist**
- **MTSS**
- **Small group instruction/differentiated**

# Theory of Action

Pulaski is focused on Establishing a culture of learning focused on a shared belief that ALL children can achieve

IF We:

- Create a culturally responsive learning environment (Conscious Discipline, Restorative Practices & PBIS) ACROSS the school community.
- Put students first by prioritizing differentiated instruction, setting student goals, standards based instruction and investing in educator practice.
- Ensure ALL students receive rigorous standards based assignments and engage families as active participants in the school community.

Then

Pulaski students will experience positive changes in academic achievement, on-track attendance, educator retention and student and adult wellness.





# Instructional Focus

Aligned with DTGSS and grade-level standards

- Rigorous Assignments
- Learning Experiences
- Standards based IEPs
- Standards based writing
  - Opinion
  - Narrative
  - Informational Text



# End of Year Goals

- *Attendance - 90% On-track attendance*
- *iReady Reading 60%*
- *iReady Math 50%*
- *Kindergarten readiness*
  - *Identification of letter sounds*
  - *Social Emotional Skills*
  - *Uses number concepts and Operation*

# Signature Programs & Initiatives

**Pulaski offers free preschool for income/state benefit eligible 4 year olds that reside in the Christina School District.**



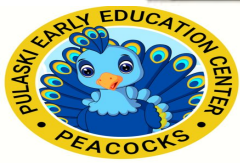
**The purpose of the program is to increase access to early childhood services in order to best prepare students for kindergarten.**



# Signature Programs & Initiatives

## ELT Innovation Project: Calm Room





**ELT Innovative Project: Hybrid Room**  **WLC**